

# ASSEMBLY INSTRUCTION

Fire resistant access panels

EI90 and EI30

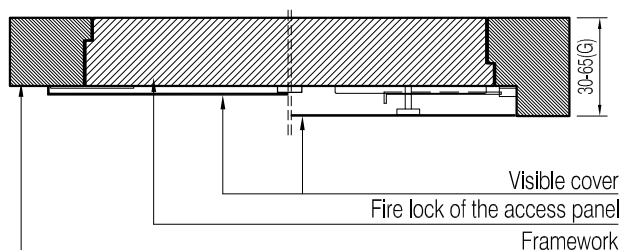
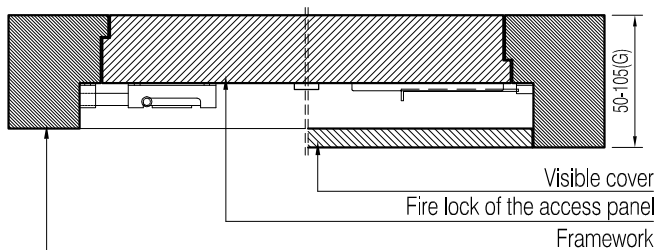
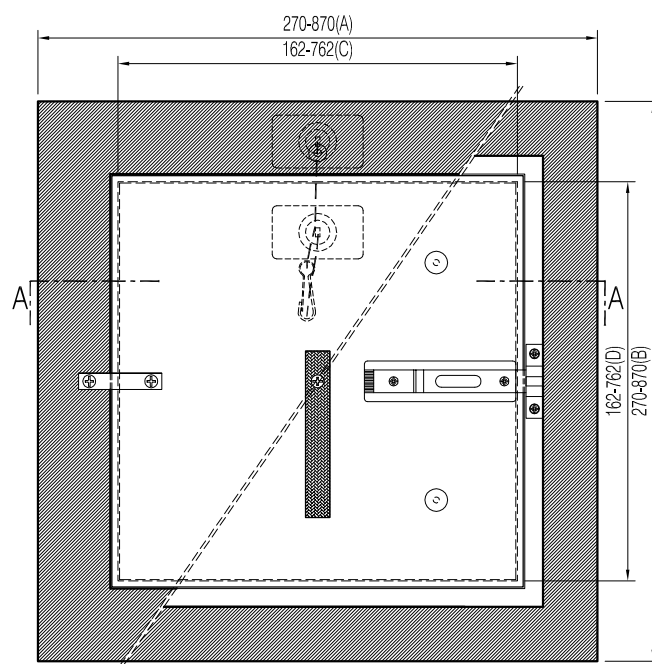
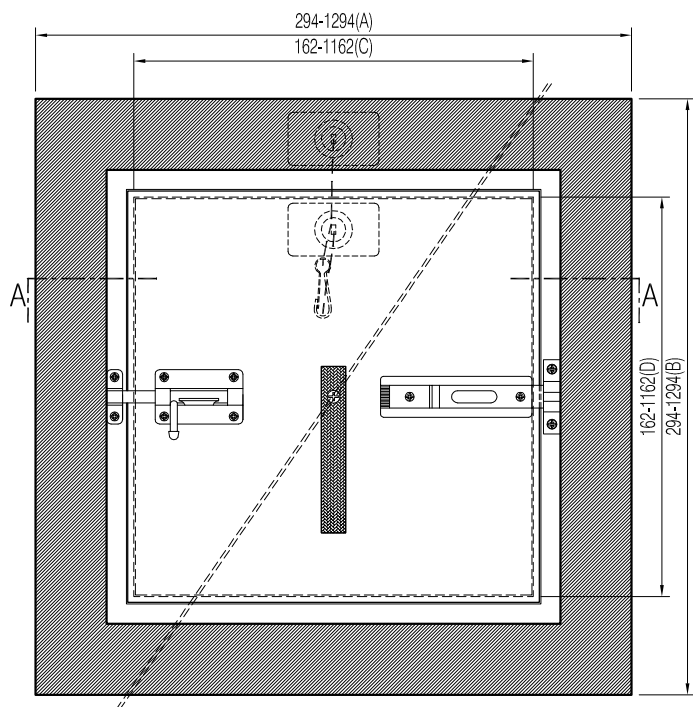
Vienna-March 2019



Fire protection systems

Stranzenberggasse 7b/1/2  
A-1130 VIENNA  
T: +43 (1) 982 01 74 - 0  
E: office@airfiretech.at  
I: www.airfiretech.at

## Design drawing - wall



Series/Type: FIREREV/Basic/.../GP; .../VKW FIREREV/Duo/.../VKS; .../ZS; .../VKA; .../GPR				
Nominal size [mm×mm]	Outer frame dimension [A×B][mm]	Hatch [C×D][mm]	Installation depth [G][mm]	Mounting screws min.3,9x55mm (pcs./side) with gaps of max. 200 mm
200 x 200	294 x 294	162 x 162	50 - 105	2
300 x 300	394 x 394	262 x 262	50 - 105	2
400 x 400	494 x 494	362 x 362	50 - 105	2
500 x 500	594 x 594	462 x 462	50 - 105	2
600 x 600	694 x 694	562 x 562	50 - 105	3
700 x 700	794 x 794	662 x 662	50 - 105	3
800 x 800	894 x 894	762 x 762	50 - 105	4
800 x 900	894 x 994	762 x 862	50 - 105	4
800 x 1000	894 x 1094	762 x 962	50 - 105	4 res. 5
800 x 1100	894 x 1194	762 x 1062	50 - 105	4 res. 5
800 x 1200	894 x 1294	762 x 1162	50 - 105	4 res. 6

Series/Type: FIREREV/Basic/.../S; .../FLI				
Nominal size [mm×mm]	Outer frame dimension [A×B][mm]	Hatch [C×D][mm]	Installation depth [G][mm]	Mounting screws min.3,9x55mm (pcs./side) with gaps of max. 200 mm
200 x 200	270 x 270	162 x 162	30 - 65	2
300 x 300	370 x 370	262 x 262	30 - 65	2
400 x 400	470 x 470	362 x 362	30 - 65	2
500 x 500	570 x 570	462 x 462	30 - 65	2
600 x 600	670 x 670	562 x 562	30 - 65	3
700 x 700	770 x 770	662 x 662	30 - 65	3
800 x 800	870 x 870	762 x 762	30 - 65	4

Test standard: EN 1364-1, EN 1634-1  
 Classification standard: EN 13501-2  
 Classification report: MA39-VFA 2014-1201.02 (EI30-EI60)  
 MA39-VFA 2010-1043.01 (EI90)  
 Permission: Z-6.55-2169 (EI30)  
 Z-6.55-2149 (EI90)

CAUTION! Pay attention to the correct locking of the pusher when closing the access panel

# ASSEMBLY INSTRUCTION

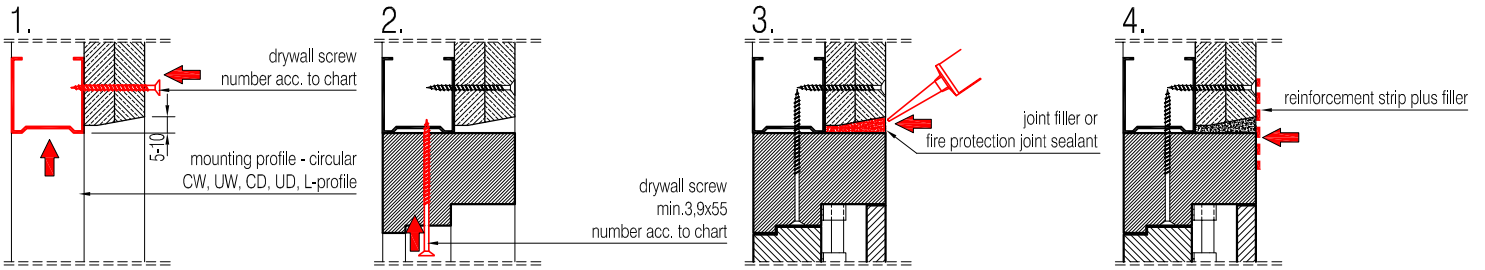
## Fire resistant access panels EI90 and EI30

Vienna-March 2019

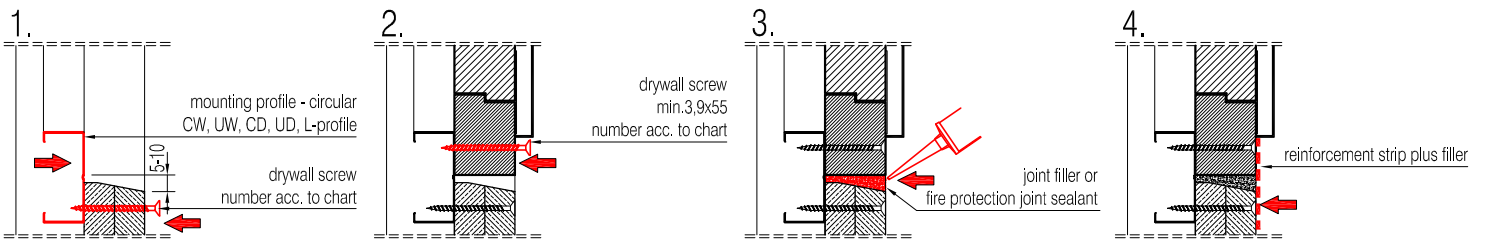


Stranzenberggasse 7b/1/2  
A-1130 VIENNA  
T: +43 (1) 982 01 74 - 0  
E: office@airfiretech.at  
I: www.airfiretech.at

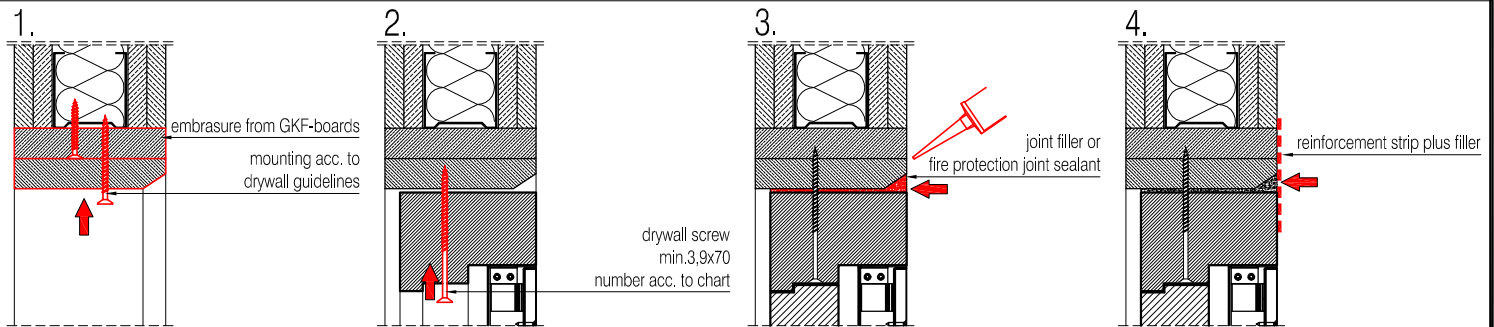
### I. Installation of the access panel in a shaft wall (Type: ...GPS; ...GP; ...VKW; ...VKA; ...VKS; ...ZS; ...GPR; ...FLJ)



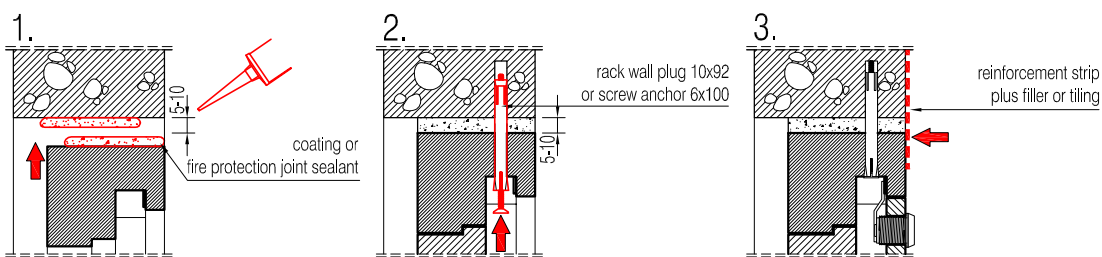
### II. Installation of the access panel in a shaft wall (Type: ...S)



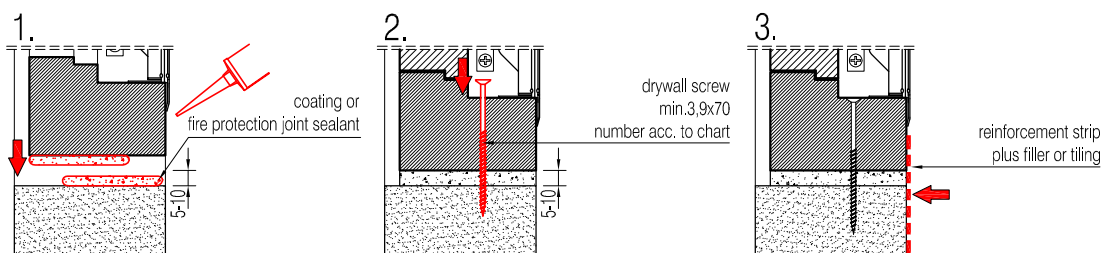
### III. Installation of the access panel in a stud wall



### IV. Installation of the access panel in a solid wall



### V. Installation of the access panel in a cellular concrete wall



All dimensions in mm!