

ASSEMBLY INSTRUCTION

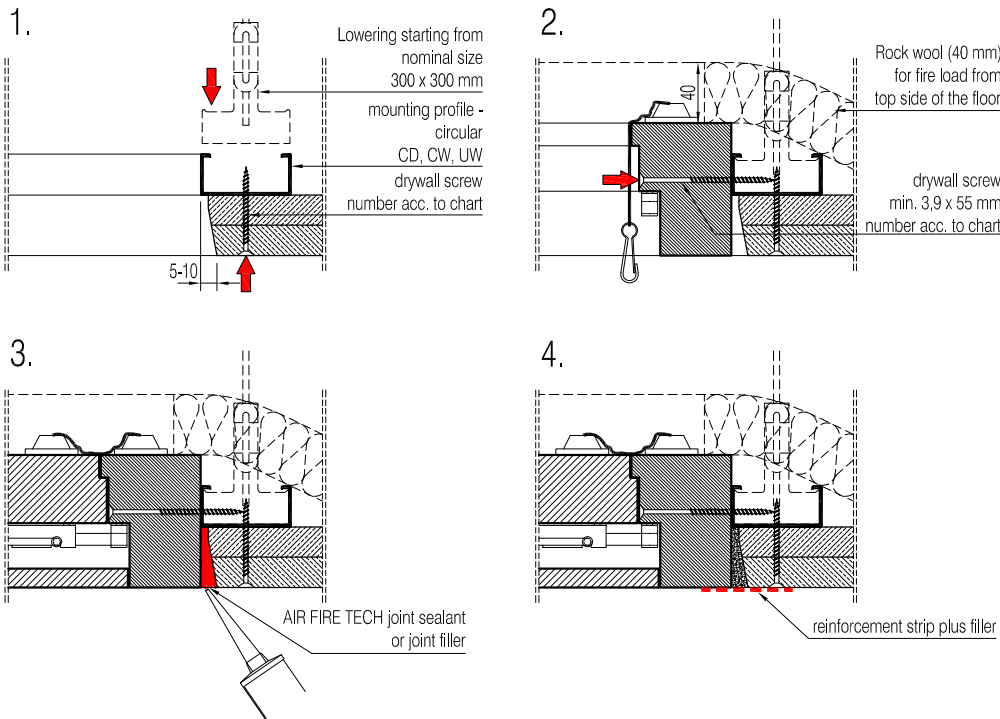
Fire resistant access panels EI90 and EI30

Vienna-March 2019



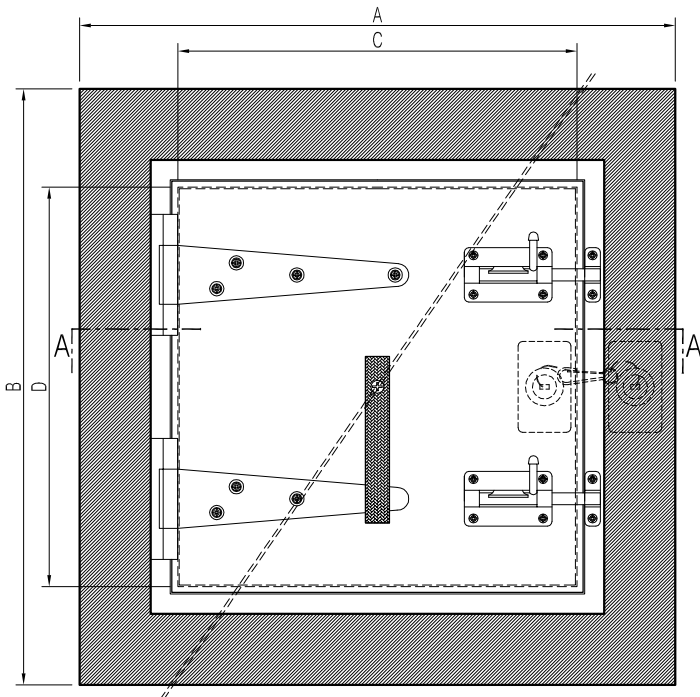
Stranzenberggasse 7b/1/2
A-1130 VIENNA
T: +43 (1) 982 01 74 - 0
E: office@airfiretech.at
I: www.airfiretech.at

Installation of the access panel in a lightweight construction floor



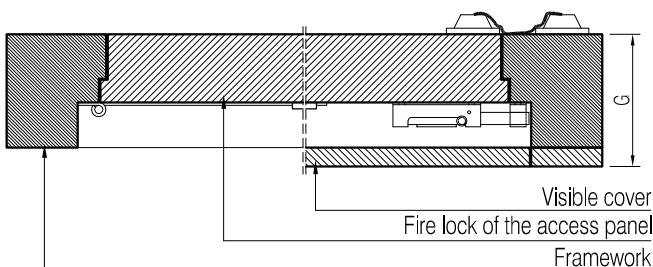
1. Create wall opening and attach mounting profiles all around. From nominal size 300 x 300 mm upwards the mounting profiles are to be lowered at four points (twice at two opposing sides).
2. Position the installation frame and fix it at the mounting profiles with screws. For fire load from the top side of the ceiling the mounting profiles need to be covered with rock wool.
3. Close the annular gap (5-10 mm) with AIR FIRE TECH fire protection joint sealant or joint filler.
4. Spattle and painting work needs to be done with opened visible cover.

Design drawing - floor



Series/Type: FIREREV/Basic/DE... FIREREV/Duo/DE...				
Nominal size [mm×mm]	Outer frame dimension [A×B][mm]	Hatch [C×D][mm]	Installation depth [G][mm]	Mounting screws min. 3,9x55mm (pcs./side) with gaps of max. 200 mm
200 x 200	294 x 294	152 x 162	45 - 105	2
300 x 300	394 x 394	252 x 262	45 - 105	2
400 x 400	494 x 494	352 x 362	45 - 105	2
500 x 500	594 x 594	452 x 462	45 - 105	2
600 x 600	694 x 694	552 x 562	45 - 105	3
700 x 700	794 x 794	652 x 662	45 - 105	3
800 x 800	894 x 894	752 x 762	45 - 105	4
850 x 850	944 x 944	812 x 812	45 - 105	4

Test standard: EN 1364-2
 Classification standard: EN 13501-2
 Classification report: MA39-VFA 2010-1027.02 (EI30)
 MA39-VFA 2010-1330.02 (EI90)
 Permission: Z-6.55-2200 (EI30)



CAUTION! Pay attention to the correct locking of the pusher when closing the access panel